



Surface Use Restriction
Portion of Annabessacook Lake in Monmouth and Winthrop, Maine

Pursuant to 38 MRSA §1864, the Maine Departments of Environmental Protection (DEP) and Inland Fisheries and Wildlife (DIFW) hereby establish a temporary surface use restriction on two areas of Annabessacook Lake in Monmouth and Winthrop. The two areas are shown on the attached image and encompass the following: a 20-acre area at the north end of the lake in Winthrop and a 51.5-acre area at the southwest end of the lake near the Waugan Road Bridge.

The purpose of this surface use restriction is to enable effective suppression of the invasive aquatic plant variable-leaf water milfoil and to prevent spread of this plant in Annabessacook Lake and to downstream waterbodies during plant removal work in 2026. Aquatic invasive plant removal in 2026 includes manual removal of regrowth, following an herbicide treatment in 2025.

By this Order, the restriction on watercraft during 2026 is as follows:

From April 1, 2026 through December 31, 2026 (unless canceled in writing by the Commissioners), no watercraft of any type may enter or travel the northern area and southwest portion of Annabessacook Lake, indicated on the image accompanying this order.

Exceptions to this Order are limited to boat travel 1) in emergency situations where property or human safety is endangered and 2) specifically allowed by the DEP or DIFW to survey for and remove invasive plants, deploy and retrieve fragment nets and buoys, and maintain fragment nets.

Buoys labeled "Area Closed" will be deployed along the boundary of the restricted areas in the lake.

ORDERED BY:

Melanie Loyzim, Commissioner
Department of Environmental Protection

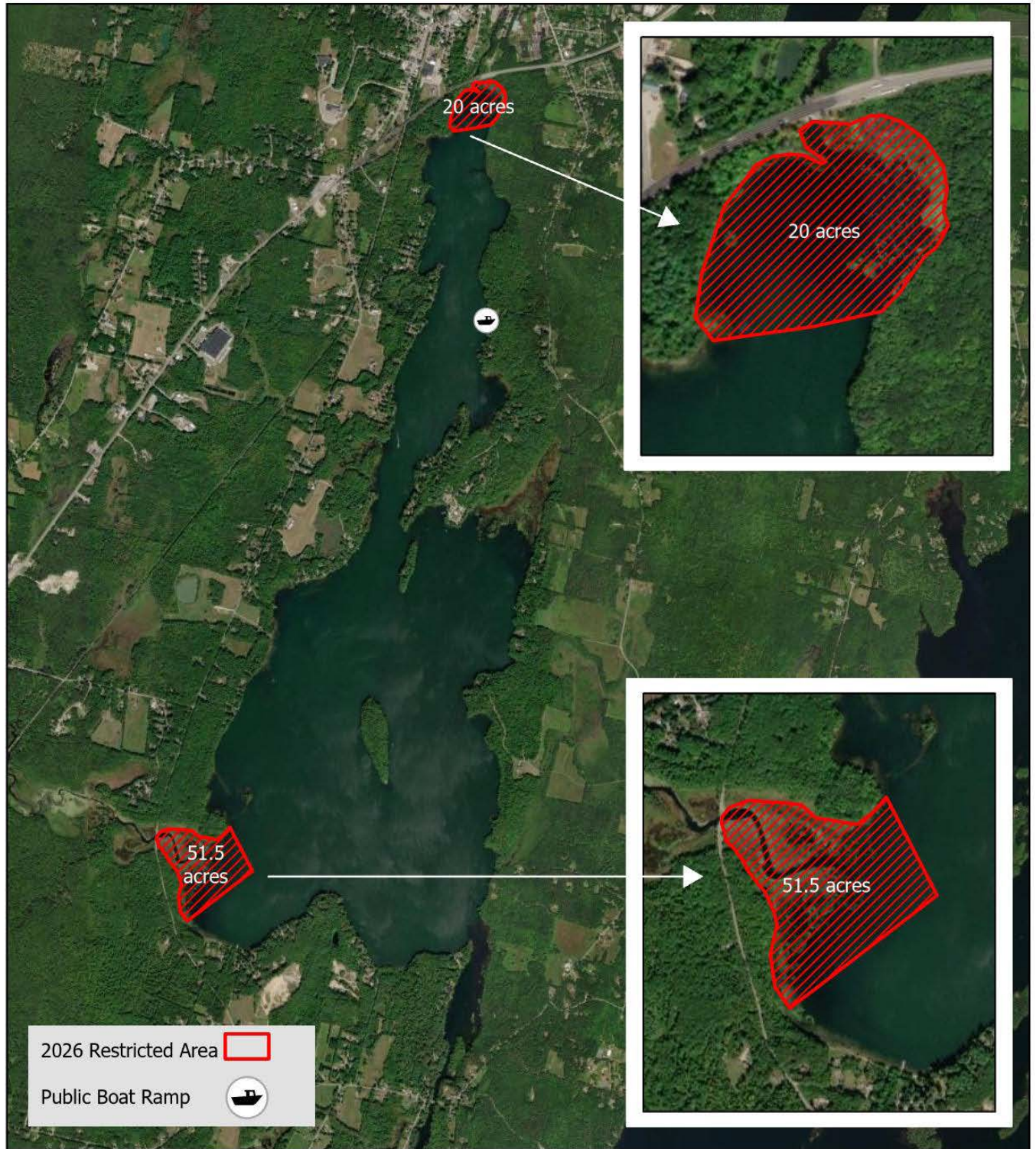
2/24/2026
Date

Judith Camuso, Commissioner
Department of Inland Fisheries & Wildlife

2/25/2026
Date



Annabessacook Lake, Winthrop & Monmouth, ME 2026 Surface Use Restriction



0

2.25

4.5 Miles

N